



## 忍者N-S无线游戏手柄 产品说明书(PG-SW038)中文版

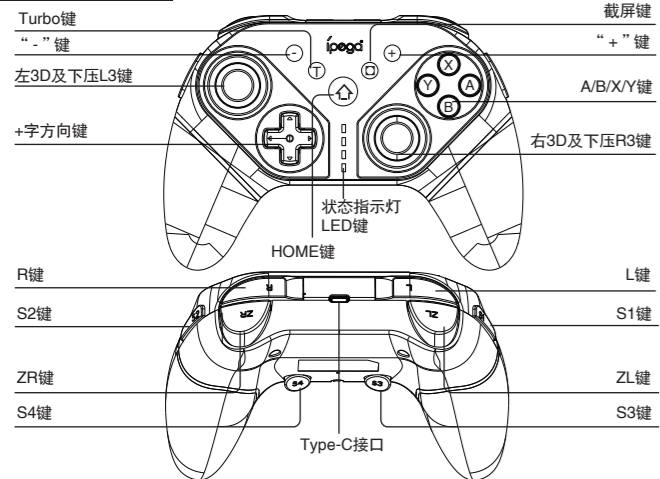
### 产品适用说明:

- 1.本手柄适合操作N-S/P3/安卓及电脑(Win7以上系统)设备上的游戏。
  - 2.本手柄的功能按键——对应N-S\_pro手柄的按键功能,并且支持TURBO连打功能。
  - 3.本手柄支持六轴功能,使玩家得到更好的游戏体验。
  - 4.结构符合人体工程学,手感舒适。
  - 5.支持编程功能,可根据用户的爱好,把常用的功能键或组合键设置到侧边及底部的S1-S4编程键,方便使用。
- ★因官方游戏平台软件升级或源代码变更等不可抗拒的因素造成部分游戏无法与本产品连接操作,我公司不负任何责任。对此我公司保留最终解释权。
- 技术支持QQ群: 837350697  
客服电话: 0755-2791 8998  
在线时间: 周一至周五9:30-17:30



Ipega官方微信公众  
(关注微信号 下载游戏大厅)

### 功能按键图示:



### 产品特性参数:

- 1.工作电压: DC3.7V
- 2.工作电流: <50mA
- 3.静态电流: <20uA
- 4.持续使用时间: >8H
- 5.输入电压/电流: DC5V/500mA
- 6.充电时间: 约3小时
- 7.蓝牙3.0, 传输距离: ≤8M
- 8.电池容量: 400mAh
- 9.待机时间: 满电放置30天

### 产品使用说明:

#### N.S主机连接:

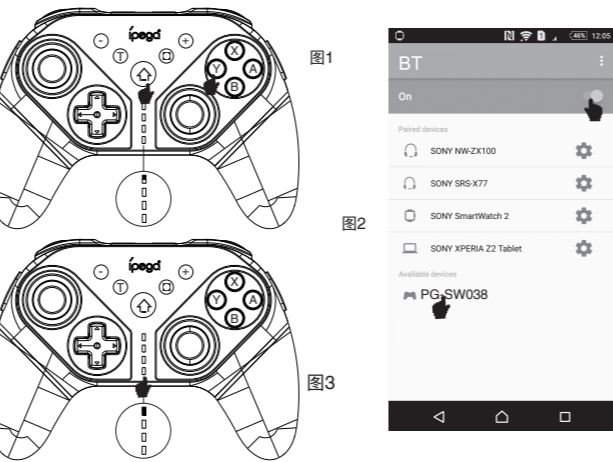
- 1.首次连接手柄到主机: 打开N.S 主机, 在N.S主机主界面, 用手指触摸点击: 手柄 → 更改握法/顺序, 进入到主机配对模式界面。
2. 在手柄关机状态下, 按B+HOME组合键2秒开启手柄并进入配对模式, 手柄上的LED灯开始快速循环闪烁, 当单个或多个LED常亮时(主机自动分配), 手柄与主机配对成功, 然后按A键操作。
- 3.已成功连接: 通过长按HOME键2秒开启手柄, 手柄与主机自动连接, 然后按A键进行操作。



### 安卓设备连接:

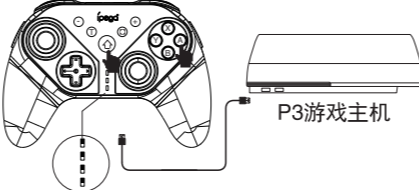
在手柄关机状态下, 同时按Y+HOME键2秒进入安卓标准游戏配对模式, 手柄LED灯快闪, 当安卓手机/安卓平板/安卓智能电视搜索到“PG-SW038”设备名时, 选择连接。连接成功后, 手柄LED灯常亮。已成功连接后, 可以直接按HOME键、LED灯慢闪, 自动回连。

推荐下载游戏平台: 手机扫描说明书首页二维码关注艾派格官方公众号, 按提示下载并安装游戏平台(葡萄游戏厅), 进入平台下载所需要的游戏。



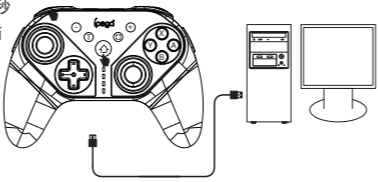
### P3主机连接:

- 1.在手柄关机状态下, 长按A+HOME组合键2秒开机, 手柄LED指示灯闪烁。
- 2.使用一条USB数据线将手柄与P3主机连接, 按HOME键配对。
- 3.配对成功后, 对应的通道LED长亮, 手柄进入P3模式操作。
- 4.拔掉USB线, 手柄进入无线连接。



### 有线连接PC设备:

- 1.在手柄关机状态下, 长按L+HOME组合键2秒开机, 手柄LED灯快闪, 用USB数据线将手柄连接到PC设备, 此时为PC 有线模式, 手柄LED灯长亮。
- 2.通过长按HOME键3秒可切换PC Xbox360模式, 此时手柄LED灯闪烁两次提示后长亮。
- 3.备注: 有线连接的模式下, 无六轴功能



### 操作使用模式:

	安卓系统	N · S 主机
	安卓无线模式	N · S 无线模式
模式配对(长按3秒)	Y+Home	B+HOME
指示 灯	LED	LED
备 注	不支持六轴	支持六轴

	P3主机	PC电脑
	P3无线模式	PC有线模式
模式配对(长按3秒)	A+Home	L+Home
指示 灯	LED	PC P3模式: LED PC 360模式: LED
备 注	无线模式下进入搜索状态时需插USB数据线, 连接成功时拔掉USB线, 手柄进入无线连接	不支持六轴

### 编程方法:

- 1.手柄左右各一个编程键为S1/S2,底部为编程键S3/S4。
- 2.每个编程键可以对单个动作按键进行映射或对多个按键进行编程。(如A/B/X/Y/L1/L2/R1/R2/L3/R3/上/下/左/右) 均可设置编程。
- 3.单个编程键对应允许最多可设置10个键组合。
- 4.编程键无TURBO连打功能。

5.编程键具有记忆功能, 无论手柄休眠、关机、重启, 手柄都会记忆住之前最后一次的工作状态。

### 编程方法:

- 1.同时按住需要设置的编程按键 (S1 S2 S3 S4) 和 “+” 键 (START), 此时配对 LED指示灯1#, 4#和2#, 3#交替快闪后, 松开按键, 进入编程设置模式。
- 2.按下需要复制的一个或多个常规功能键(如按下“A/B/X/Y/L1/L2/R1/R2/L3/R3/上/下/左/右/”中的一个或多个键或组合键) 后, 再次按下对应的编程键确认并自动退出, 即完成编程设置, 模式指示灯又回到设置前的显示状态。
- 3.编程成功后, 编程键则具有刚编程映射的某单个键或多个键相同的功能。

### 清除编程键功能:

- 1.同时按住需要清除的编程按键 (S1 S2 S3 S4) 和 “+” 键 (START), 此时LED指示灯1#, 4#和2#, 3#交替快闪后, 松开按键。
- 2.再次按下需取消功能之编程键确认后自动退出, 模式指示灯又回到设置前的显示状态。即可清除编程键功能。
- 3.S1/S2/S3/S4键初始功能分别对应BAYX键。
- 4.同时按下S3和S4加 “+” 键 (START) 可恢复出厂编程设置。

### TURBO功能开启/关闭:

- 1.动作键包括(A/B/X/Y/L/ZL/R/ZR) 8个按键, 均可手动设置TURBO功能。
- 2.设置方法: 长按动作键, 同时再轻按TURBO键, TURBO功能开启: 长按动作键, 同时轻按TURBO键, TURBO功能关闭。
- 3.产品断开连接后, 之前设置TURBO功能自动清除, 若启用TURBO功能时, 必须重新设置。

### 手柄充电/休眠/唤醒/关机功能:

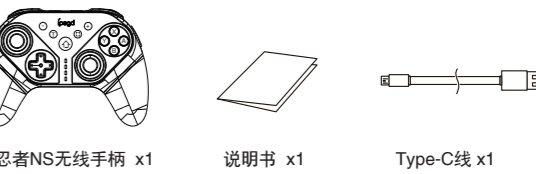
#### 手柄充电/休眠/唤醒功能

- 1.关机状态下充电时LED-LED4指示灯同时闪烁, 充满熄灭。
- 2.开机连接设备时充电当前LED指示灯闪烁, 充满长亮。
- 3.睡眠/唤醒功能: 手柄在5分钟内不使用会进入休眠状态。当需要重新使用时需按HOME键唤醒即可回连。
- 4.电池电量不足时, 对应的指示灯快闪提示。

### 注意事项:

- 1.请不要把本产品潮湿或高温地方存储。
- 2.不要敲击、摔打、刺穿、或试图去分解本产品, 以免对产品造成不必要的损害。
- 3.非专业人员误拆卸本产品,否则不在售后保修服务内。
- 4.因官方软件升级或源代码变更等不可抗拒的因素造成部分游戏无法与本产品连接操作, 我公司不负任何责任。对此我公司保留最终解释权。

### 产品清单:



忍者NS无线手柄 x1 说明书 x1 Type-C线 x1



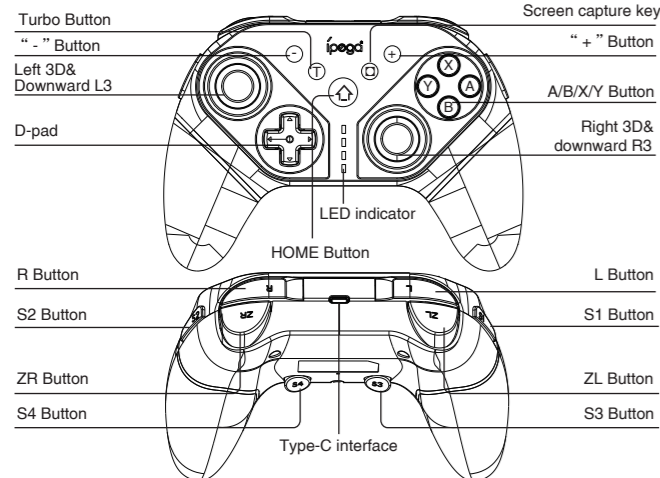
## Ninja run Wireless Controller User Manual(PG-SW038)

### Application Introduction:

- 1.Product is compatible with N-S / P3 / Android and computer (Win7 or above).
- 2.Product function buttons correspond to N-S\_pro function and support TURBO function.
- 3.Product support six-axis function so that players can get better game experience.
- 4.The structure is ergonomic and feel comfortable.
- 5.Support programming function, according to the user's preference, the normal function buttons or combination buttons can be set to S1-S4 programming buttons, convenient to use.

★Due to the official game platform software upgrades or source code changes and other not resist factors caused some of the game can not be played or connected with our Gamepad, iPega company has no responsibility. iPega reserve the right of final interpretation for this.

### Instruction for key function:



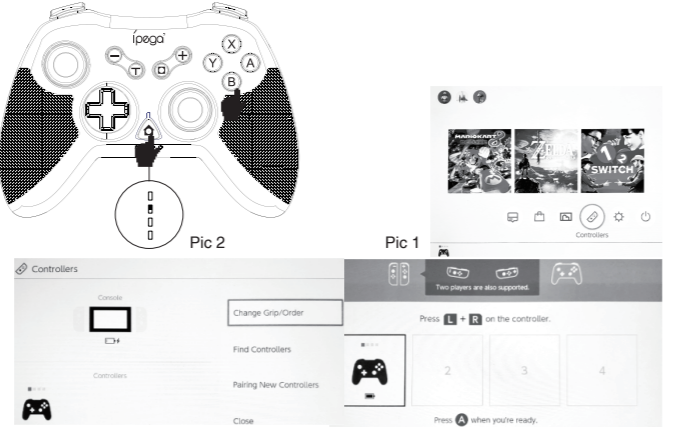
### Electrical Parameters:

- 1.Working voltage: DC3.7V
- 2.Working current: <30mA
- 3.Static current: <20uA
- 4.Continuous operation time: >8H
- 5.Input voltage/current: DC5V/500mA
- 6.Charging time: About 3 hours
- 7.BT3.0, transmission distance: ≤8M
- 8.Battery capacity: 400mAh
- 9.Stand-by time: 30 days after fully charged

### Connection Mode:

#### Switch console connection :

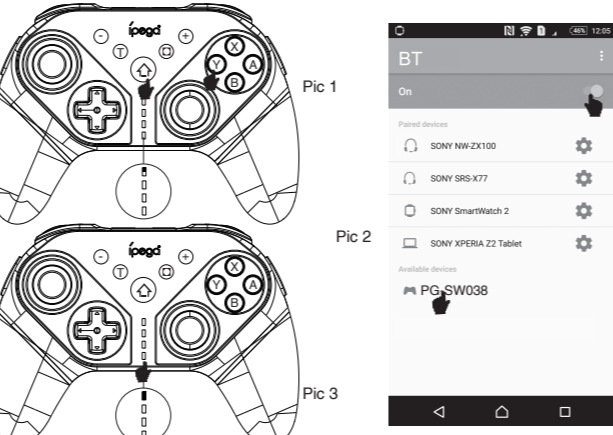
1. First connect gamepad to console: turn on switch console, click the folloing selection on the main interface : Controller → Change Grip/order, enter the console pairing mode interface Press L + R on the controller.
- 2.When gamepad is turn off, press the combination button B+HOME for 2 seconds to turn on the gamepad to enter the pairing mode, the LED light start to flash in a circle, when one or more LEDs are always on (Automatic console allocation), indicate the gamepad paired with the console successfully, then press A button to operate.
- 3.Alreadyed connect: Press the HOME button for 2 seconds to turn on gamepad, gamepad will connect to the console automatically, then press A button to operate.



### Android device connection :

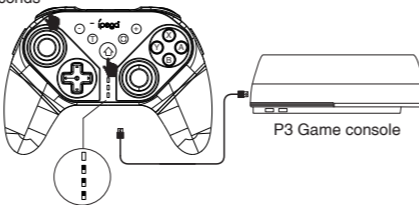
When the gamepad is turn off, press Y+HOME button for 2 second to enter the Android standard game pairing mode, gamepad LED light flash quickly, search the device name"PG-SW038"on Android smartphone/tablet/smart TV and selecte "connection"! After connected, the LED light will be always on! When gamepad is already connected as before you can press HOME button directly,LED light flash slowly to indicate reconection automaticly.

Recommend game platform: Octopus Game App.



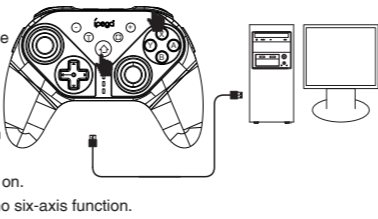
### P3 console connection:

- 1.When the gamepad is turn off, press A+HOME combination button for 2 seconds to turn on, LED indicator will flash.
- 2.Connect the gamepad to the P3 console via USB cable, press the HOME button to pair it.
- 3.After paired, the corresponding channel LED is on and the gamepad will enter P3 mode operation.
- 4.Remove USB cable, the gamepad enter the wireless connection.



### PC Wired Connection:

- 1.When gamepad is turn off press L+HOME combination button for 2 seconds to turn on gamepad LED light flash quickly, Connect the gamepad to the PC device via USB cable. At this time is PC wired mode, the gamepad LED light is on.
- 2.Press HOME button for 3 seconds to switch to PC Xbox360 mode, at the same time gamepad LED light flash twice and then light on.
- 3.Remark: iUnder wired connection mode, no six-axis function.



### Operation instructions:

	Android System	N · S console
	Android wireless mode	N · S wireless mode
Pair Mode Press and hold on 3s	Y+Home	B+HOME
Indicator	LED	LED
Remark	six-axis not supported	Support six -axis

	P3 Console	PC computer
	P3 wireless mode	PC wired mode
Pair Mode Press and hold on 3s	A+Home	L+Home
Indicator	LED	PC P3 mode: LED PC 360 mode: LED
Remark	When enter the search status under wireless mode, need to plug in the USB cable. After connected, remove USB cable and gamepad enter the wireless connection	six-axis not supported

### Programming function:

- 1.S1/S2 is programming button on the left/right of the gamepad, and the bottom is programming button S3/S4.
- 2.Each programming button support for mapping a single action button or programming multiple buttons. (Such as A/B/X/Y/L1/L2/R1/R2/L3/R3/up/down/left/right) can be set and programmed.

3. A single programming button allows to set the combination buttons by up to 10 buttons.
4. The programming button has no TURBO function.
5. The programming button has a memory function, no matter the gamepad is sleeping, shutting down, or restarting, it will remember the last working state before.

### Programming method:

- 1.Press and hold the programming button (S1 S2 S3 S4) and the "+" button (START) that need to be set at the same time, then pairing LED indicators 1#, 4# and 2#, 3# flash alternately, release the button to enter the programming mode;
- 2.Press one or more regular function buttons to be copied (such as pressing one of "A/B/X/Y/L1/L2/R1/R2/L3/R3/up/down/left/right" Or multiple buttons into a combination), press the corresponding programming button again to confirm and automatically exit, that is, the programming setting is completed, and the mode indicator light returns to the display state before the setting.
- 3.After completed programming, the programming button has the same function as a single button or multiple button just programmed and mapped.

### Clear Programming Function Method:

- 1.Press and hold the programming buttons (S1 S2 S3 S4) and the "+" button (START) that need to be cleared at the same time. At this time, the LED indicators 1#, 4# and 2#, 3# flash alternately, then release the button;
- 2.Press the programming button that needs to cancel the function again to confirm and exit automatically, and the mode indicator will return to the display state before setting. The programming button function is cleared.
- 3.The initial functions of S1/S2/S3/S4 button correspond to BAYX button.
- 4.Press S3 and S4 and the "+" key (START) at the same time to restore the factory programming settings.

### TURBO function On/Off:

1. Action button(A/B/X/Y/L/ZL/R/ZR) 8 button, TURBO function can be set manually.
2. Setting method: Holding the action button, press TURBO button at the same time to turn on TURBO function: Repeat holding the action button, press TURBO button at the same time to turn off the TURBO function.
3. After the product is disconnect, the previous set TURBO function is automatic clear, if the TURBO function is enabled it must be reset.

### Gamepad charge/sleep/wake up/off function:

- 1.Gamepad turn off to charging LED1-LED4 indicator light flash at the same time, close when full charged.

- 2.Turn on device to connect, charging LED indicator flash, and it is full and bright.
3. Sleep/wake-up function:if the gamepad is not use within 5 minutes, it will enter into sleep. When need to Use it again,need to press the home button to wake up and connect back.
4. When the battery power is no enough, the correspond indicator light flash quickly.

### Notes:

1. Please do not store product in humid or high temperature places.
2. Do not knock, beat, puncture, or try to disassemble to avoid unnecessary damage to the product.
3. Non-professionals disassemble this product by mistake otherwise it will not be covered by the after-sales warranty service.
4. Due to the official game platform software upgrades or source code changes and other not resist factors caused some the game can not be played ot connected with our Gamepad, iPega company has not responsibility.iPega reserve the right of final interpretation for this.

### Included:



Ninja run Wireless controller x1 User Manual x1 Type-C cable x1

iPega and ePega trademarks all belong to PEGA LIMITED.

Patent NO.: 201930743696.0