



文脈網

拉伸无线手柄

产品说明书(PG-9217)

适用说明:

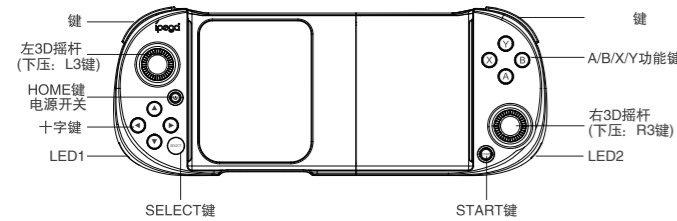
1. 产品支持直连直玩, 无需多余的游戏平台和复杂的设置与激活操作。(支持安卓6.0以上, iOS11.0-13.3.1系统)。
 2. 产品适用于安卓手机(平板)/苹果手机(平板)/安卓智能电视等无线连接使用, 支持P3主机/N-S主机/PC电脑有线连接, 进行游戏操作时使用。
 3. 一体式拉杆伸缩支架, 拉伸度支持135-165mm;
 4. 结构符合人体工程学, 手感舒适
 5. 产品按键带炫酷LED背光灯(同时按下home+R3键可开启或关闭按键灯光);
- ★因手机系统问题, 个别手机可能不支持此设备(如: 联发科平台的手机无法支持)
- ★因官方游戏平台软件升级或源代码变更等不可抗拒的因素造成部分游戏无法与本产品连接操作, 我公司不承担任何责任。对此我公司保留最终解释权。

售后客服QQ群: 837350687
 客服电话: (0755) 2791 8998
 在线时间: 周一至周五9:30-17:30



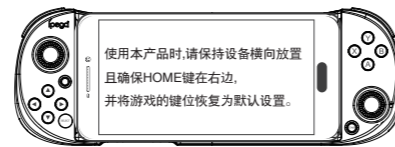
ipega官方微信公众号
 (关注微信号 下载游戏大厅)

功能按键图示:



产品特性参数:

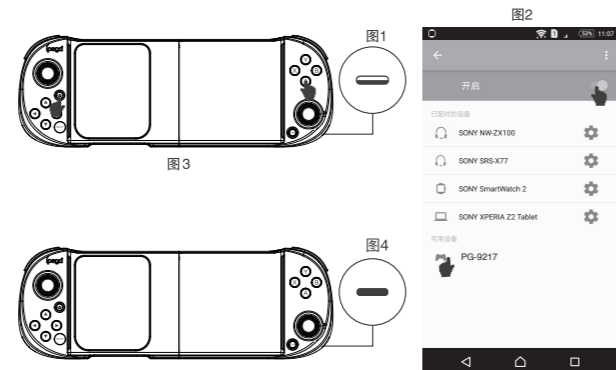
1. 工作电压: DC3.7V;
2. 工作电流: <30mA;
3. 静态电流: <15uA;
4. 持续使用时间: >15H;
5. 输入电压/电流: DC5V/500mA;
6. 充电时间: 约2小时;
7. 无线5.0, 传输距离: ≤8M;
8. 电池容量: 350mAh;
9. 待机时间: 满电放置30天;



产品使用说明:

安卓V3 直玩模式:

同时按A+Ⓜ键2秒进入V3直玩配对模式(安卓), 手柄LED2灯快闪, 当安卓手机/平板搜索到“PG-9217”设备名时, 选择连接! 连接成功后, 手柄LED2灯常亮。已成功连接过, 可以直接按Ⓜ键, LED2灯慢闪, 自动回连。



IOS V3 直玩模式:

同时按Y+Ⓜ键2秒进入V3直玩配对模式(IOS), 手柄LED2灯快闪, 当苹果手机/平板搜索到“PG-9217”设备名时, 选择连接, 连接成功后, 手柄LED2灯常亮。已成功连接过, 可以直接按Ⓜ键, LED2灯慢闪, 自动回连。



安卓/IOS直玩按键映射功能:

关注公众号 (“ShootingPlus”), 查看公众号内的默认操作说明, 如需设置映射键位, 请下载安装“ShootingPlus V3”APP, 在APP内进行按键映射以及调整按键位。



ShootingPlus微信公众号
 (关注微信号 下载 ShootingPlus app)

安卓标准游戏模式:

1. 同时按X+Ⓜ键2秒进入安卓标准游戏配对模式, 手柄LED1灯快闪, 当安卓手机/安卓平板/安卓智能电视搜索到“PG-9217”设备名时, 选择连接, 连接成功后, 手柄LED1灯常亮。已成功连接过, 可以直接按Ⓜ键, LED1灯慢闪, 自动回连。
2. 安卓标准游戏下载: 手机扫描说明书首页二维码关注ipega官方公众号, 按提示下载并安装游戏平台(葡萄游戏厅), 进入平台下载所需要的游戏。



有线模式:

有线模式下自动识别各个模式, 按住RB键插USB数据线LED1灯快闪, 支持PC电脑、安卓设备、P3主机、N-S主机。

1. PC电脑连接方法: 按住RB键插USB数据线PC连接成功后默认为X-input 360模式, 手柄LED1灯长亮, 同时按住select+start 3秒切换为D-input P3模式, 手柄LED1灯长亮。
2. 按住RB键插USB数据线连接P3主机, switch主机可自动识别, 安卓连接成功后LED1灯常亮。

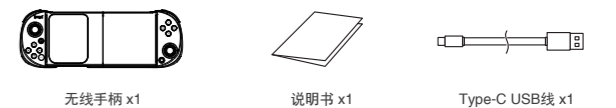
手柄充电/休眠/唤醒/关机功能:

1. 手柄充电功能:
 - a. 低电时, LED1指示灯快闪提示。
 - b. 充电时, LED1指示灯慢闪提示。
 - c. 充满时, LED1指示灯长亮提示。
2. 手柄休眠/唤醒/关机功能:
 - a. 游戏手柄在10分钟内无任何按键操作时自动关机休眠。
 - b. 当需要重新使用时需按HOME键唤醒即可回连。
 - c. 在开机状态下, 长按HOME键3秒, 产品关机, 所有LED指示灯熄灭。

注意事项:

1. 请不要把本产品放在潮湿或高温地方存储;
2. 不要敲击、拍打、棒打、刺穿、或试图去分解本产品, 以免对产品造成不必要的损害;
3. 产品内置电池, 请勿和垃圾一起丢弃;
4. 不要在靠近火或其它热源的地方对手柄进行充电;
5. 非专业人员请勿拆卸本产品, 否则不在售后保修服务内。

产品清单:



iPega 商标属于 PEGA LIMITED 所有。



Retractable Gamepad

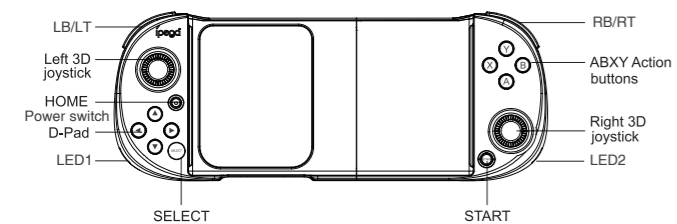
User Manual (PG-9217)

Application Instruction:

1. The product support Direct-Play mode, Connect & Play, Easy to operate, No activation, No APP Needed; (Android 6.0 or above, iOS11.0-13.3.1)
2. This Gamepad support playing games on Android/ iOS smartphone/ tablet, smart TV via wireless connection, playing games on P3/ N-S and Windows PC via wired connection.
3. Designed with telescopic phone stand, support hold mobile phone up to 135-165mm;
4. Ergonomic structure, comfortable hand feeling.
5. The buttons come with cool LED backlight (press home+R3 buttons at the same time to turn on or off the lights)

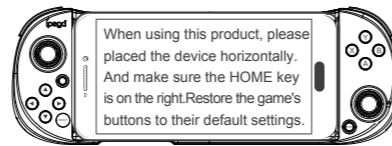
- ★Due to the mobile phone system problems, individual mobile phones may not support this device (e.g. the mobile phones of the Media Tek platform can not support it).
- ★Due to the official game platform software upgrade or source code changes and other non-resist factors caused of some games can not be played or connected with our gamepad. Our company has no responsibility, we reserves the right of final interpretation for this.

Instruction for key function:



Characteristic parameters:

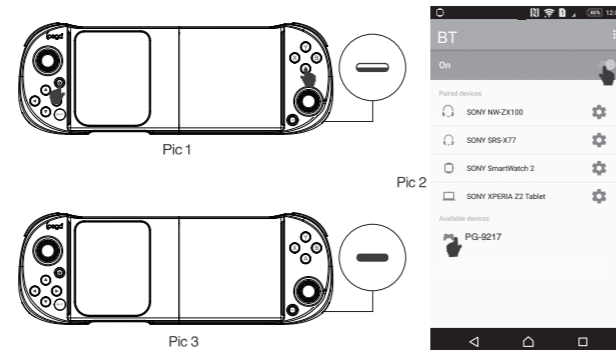
1. Working voltage: DC3.7V;
2. Working current: <30mA;
3. Static current: <15uA;
4. Continuous gameplay time: >15H;
5. Input voltage/current: DC5V/500mA;
6. Charging time: about 2 hours;
7. Bluetooth 5.0 transmission distance: ≤ 8M;
8. Battery capacity: 350mAh;
9. Standby time: up to 30days once fully charged;



Operation instructions:

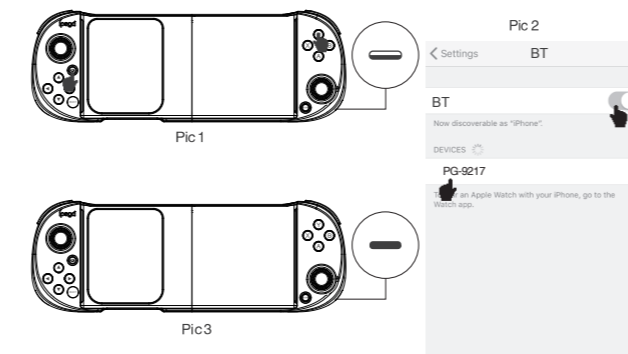
Direct Play Mode (Android V3):

Press and hold A+Ⓜ buttons 2 seconds to enter Direct Play Mode (Android V3). At this time, the LED2 indicator flashes quickly, then search “PG-9217” on Android phone/tablet bluetooth and pair, LED2 indicator will be always on after connected successfully! If you connected before, press the Ⓜ button directly, LED1 indicator will flash slowly, automatically reconnect!



Direct Play Mode (IOS V3):

Press and hold Y+Ⓜ buttons for 2 seconds to enter Direct Play Mode (IOS V3). At this time, the LED2 indicator flashes quickly, then search “PG-9217” on iOS phone/tablet bluetooth and pair, LED2 indicator will be always on after connected successfully! If you connected before, press the Ⓜ button directly, LED2 indicator will flash slowly, automatically reconnect!



Mapping game buttons for direct play mode (Android/IOS):

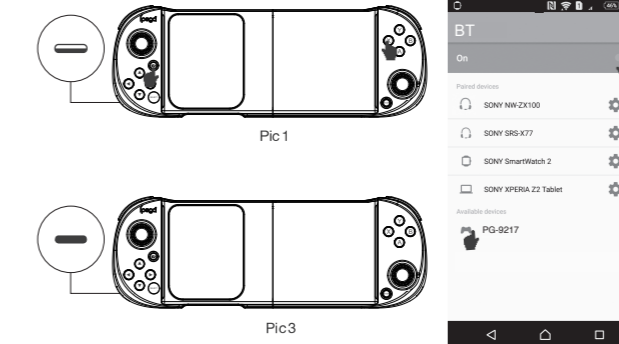
Check the default operation instructions at “www.ipega.hk”. If you need to reset the game buttons, please download and install “ShootingPlus V3” APP from APP Store/ Google Play Store, remap the game buttons in the APP and adjust the button position!



ShootingPlus V3

Android Standard Mode:

Press and hold X+Ⓜ buttons for 2 seconds to enter Android Standard Mode. At this time, the LED1 indicator flashes quickly, then search “PG-9217” on Android phone/tablet/smart TV bluetooth and pair, LED1 indicator will be always on after connected successfully! If you connected before, press the Ⓜ button directly, LED1 indicator will flash slowly, automatically reconnect!



Wired mode:

It will automatically recognizes different mode under wired mode. Press “RB” to plug in the USB cable, LED1 flash quickly. Support Windows PC, Android device, P3 and N-S.

1. PC connection method: Press “RB” to plug the USB cable into Windows PC (The default mode is X-input 360 mode). LED1 is always on. Press “select+start” at the same time for 3 seconds to switch to D-input mode, LED1 is always on.
2. Press “RB” to plug the USB cable into P3/ N-S console. The console will recognizes and distribute LED indicator light automatically. Android device LED 1 light will be always on after connected.

Charging/sleep/wake up/off function of Gamepad:

1. Charging function:
 - a. When the power is low, the LED1 indicator flashes quickly;
 - b. When charging, the LED1 will be flashes slow;
 - c. When fully charged, the LED1 will be always on;
2. Sleep / wake up / off function:
 - a. The gamepad will automatically turn off if no operation within 10 minutes.
 - b. When you need to restart, you need to press the Ⓜ button to wake up then you can reconnect;
 - c. When the gamepad is turned on, press and hold the Ⓜ button for 3 seconds, the product will be turned off, and all the LED indicators will turn off;

Notes:

1. Please do not store this product in wet or high-temperature areas.
2. Don't knap, beat, drub, pierce, or try to decompose this product, to avoid unnecessary damage to the product.
3. The product has built-in batteries, and please don't discard them together with the garbages.
4. Don't charge the controller in a place near the fire or other heat source.
5. Non professional personnel should not disassemble the product, otherwise it will not be covered in the after-sales warranty service.

Accessories List



iPega trademarks belongs to PEGA LIMITED.